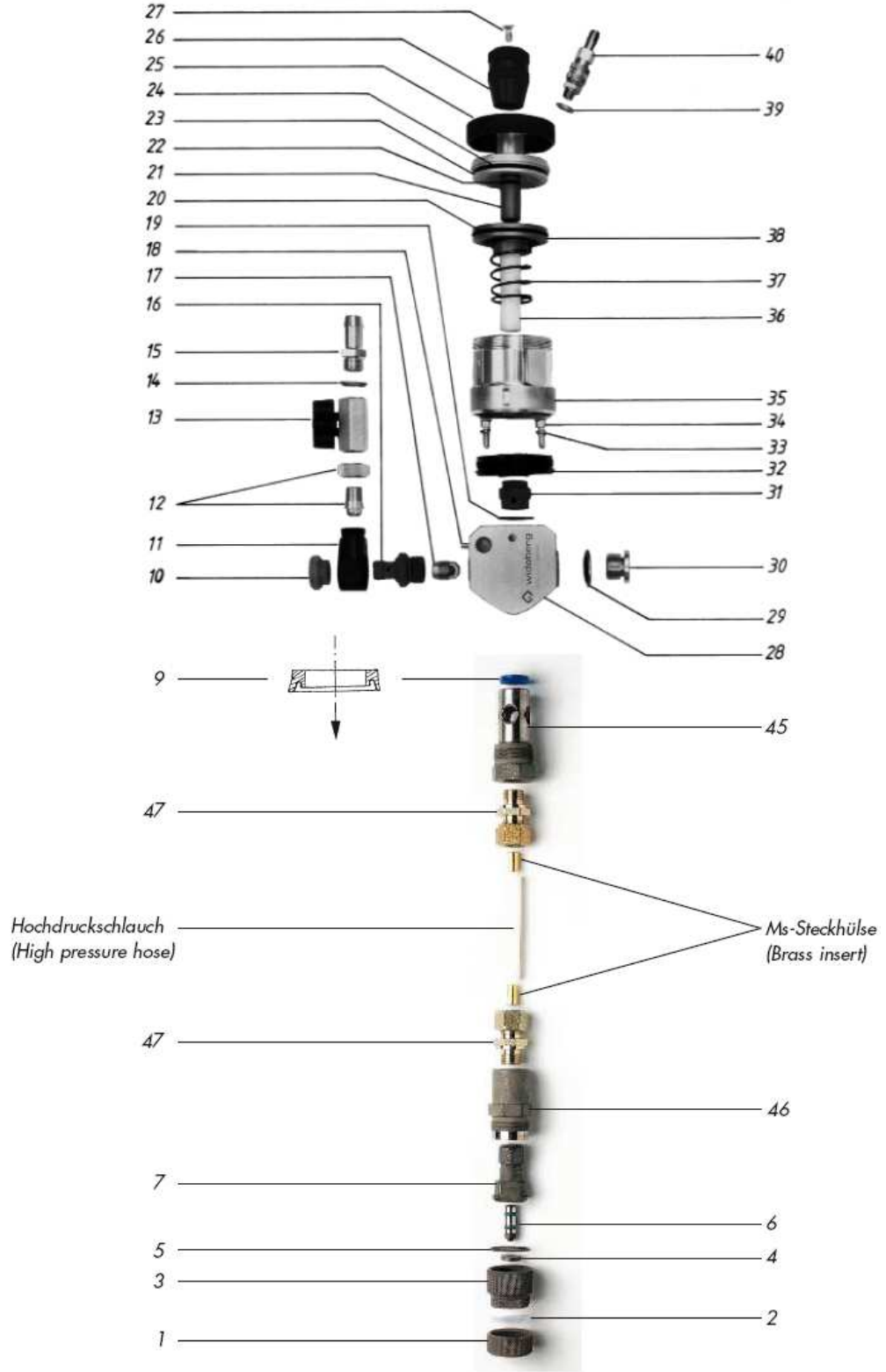
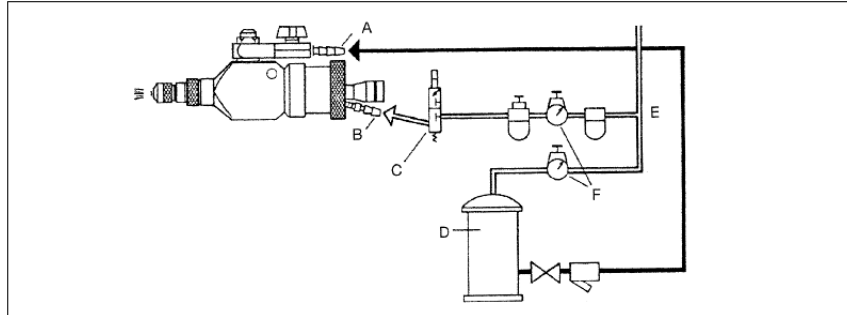




High Velocity Spray Gun type WIDOSPRAY - Special





Technical Data

Air pressure/spray	75–90 p.s.i.
Material (compound) pressure	50–90 p.s.i.
Hose ID; Air	3/8"
Hose ID; Material (compound)	1/2"
3-way valve - normally closed – port size	3/8" NPT
Minimum flow	∅ 1/4"
Spray amount per shot (adjustable)	0,2–6 cm ³
Air consumption/spray gun	approx. 0,75 m ³ /h

Control circuit

A	Compo connection
B	Air connection
C	Solenoid valve
D	Pressure vessel or pump
E	Main line
F	Pressure control

Spare parts list

Item-no.	Description	Part-no.	Item-no.	Description	Part-no.
	Original WIDOBORG		25	Retaining nut	111554
	High Velocity Spray Gun		26	Knurled knob	111538
	Type WIDOSPRAY-Special	116661	27	Flat head screw	111546
			28	Gun body	111015
	Extension compl., incl. hose + inserts	111880	29	Usit sealing ring	101672
	Modification set (no. 45, 46, 47, incl. hose)	111899	30	Inspection plug	111031
	High pressure hose per meter, inserts incl.		31	Bush	111449
1	Nozzle nut	110019	32	Cylinder flange	111414
2	Teflon seal	111759	33	Retaining ring	111430
3	Retaining nut	110027	34	Fastening screw	111422
4	* Valve seat	101290	35	Cylinder	111481
5	O-ring	110035	36	* Plunger	111465
6	* Valve piston	110043	37	* Compression spring	111457
7	* Piston guide, compl.	110124	38	* Piston assembly	111473
9	* Cup seal	110094	39	Sealing ring 1/8"	111570
10	Sealing cap	111732	40	Quick connection	111562
11	Adapter	111716	45	Cartridge body, part 1	111864
12	Threaded bush incl. nut	111767	46	Cartridge body, part 2	111872
13	Stop cock	101826	47	Screw connection	101834
14	Sealing ring 1/4"	101850			
15	Hose connection	111724	42	Standard Nozzle 0°	103004
16	Connection piece	111708	42	Standard Nozzle 20°	103209
17	* Compl. check valve	111600	42	Standard Nozzle 40°	103403
18	Grooved pin	111066	42	Standard Nozzle 65°	103659
19	O-ring	111058	42	Standard Nozzle 90°	103900
20	* Flat seal	101648	42	Standard Nozzle 120°	104000
21	Spindle	111511	42	Barrel Nozzle 40°	105406
22	O-ring	101613	42	Barrel Nozzle 65°	105651
23	Cylinder cover	111503	42	Barrel Nozzle 90°	105902
24	O-ring	101702	42	Barrel Nozzle 120°	106011

Parts marked * should be kept in stock.

Installation

1. Mount gun on a support. Use 12 mm (15/32") Ø hole in gun body.
2. Connect compressed air to quick connection no. 40. Please use clean lubricated air.
3. 3-way control valve (minimum flow Ø, 1/4") as close as possible to the gun.
When using a 3-way solenoid valve, valve is "normally closed" when de-energized. Actuation of valve can be made through an automatic timer or manually.
4. Connect material feed (compound hose) to hose connection no. 15.

Start-up

1. Open stop cock no. 13.
2. De-aerate the gun. There are 2 possibilities:
 - a) Fundamental aeration of the whole system:
Please unlock retaining nut no. 30, 2-3 times until no air will come out or till compound will emerge. Then lock again.
 - b) Quick aeration of the gun:
Put the blade of a screwdriver to the groove of the nozzle nut no. 1 and press down the nozzle until no air will come out.
After the screwdriver has been removed, the system is closed automatically.
Please check that the position of the nozzle has not changed.
3. Actuate control valve automatically or manually.
4. Adjust quantity of spray volume by means of knurled knob no. 26.

Care and maintenance

- A** To avoid damaging seals, never immerse spray gun in hot water or aggressive cleaning fluids.
Keep movable parts clean and lubricate them when maintaining.
- B** Exchange of cartridge
The most important spare parts are put together as a cartridge. If you will have on stock a complete cartridge the exchange of worn spare parts is very quick.
- C** Exchange of valve piston no. 6
Remove retaining nut no. 3. Extract valve piston no. 6 with a pincer and press in the new valve piston by hand.
- D** Replacement of plunger
Please unlock retaining nut no. 25. Then remove cylinder cover no. 23 and take out the compl. cartridge, the plunger and the piston assembly.
If the plunger is defective, the plunger has to be pressed out of the piston assembly no. 38. The best way is to heat up the piston with 150 or 200°C, then it is easy to remove the old one and to fit the new plunger.
Before fitting again to the gun the flat seal no. 20 has to be replaced. Also the inner wall of the cylinder and the plunger has to be lubricated with graphitic oil.



Tips for trouble shooting

No compound emerges from nozzle

Insufficient air pressure: increase to 75 – 90 psi

Guide bush of piston guide no. 7 is worn out. Exchange cartridge and replace piston guide.

Gun or whole system not properly de-aerated: See "Start-up, pos. 2".

Nozzle blocked

Remove nozzle and clean.

Check valve no. 17 binds or leaks

Clean or replace.

Material hardened in feed line

Clean line and stop cock no. 13.

Plunger no. 36 binds, does not retract

Exchange compression spring no. 37 and/or piston assembly no. 38 or flat seal no. 20.

Gun dribbles

Valve piston no. 6, valve seat no. 4 or complete piston guide no. 7 could be worn out. Replace these parts.

Filter cartridge of the strainer behind pump or pressure vessel is foul

Please take out and clean.

When using buffing compound

To obtain trouble free operation and minimum rate of wear, use airless compositions suitable for high pressure applications.

We reserve the right to make changes for the purposes of improvements and technical progress.